

**Personal
Care**

**Performance
Meets
Beauty**

SNF

SNF, headquartered in Andrézieux, France, is a **leading global producer of water-soluble polymers** with manufacturing sites in Andrézieux (France); Riceboro, Georgia (USA); and Taixing (China). In 2023, SNF had a turnover of approximately € 4.5bn.

Over the last 40 years, SNF has developed expertise in **polymer chemistry** designed for specific markets. In Personal Care, SNF offers a wide range of polymers such as **rheology modifiers, thickeners,** and **film formers** to cover the needs of this market.

SNF uses the newest polymerization technologies for synthesizing and manufacturing anionic, cationic, amphoteric, and nonionic polymers. As an added advantage, SNF is back-integrated in the most strategic monomers to better serve our customers regarding **product costs, quality,** and **supply.**

This know-how in monomers, polymer design, and industrial process applications allows SNF to **react and innovate** to the changing trends and customer needs within the **cosmetic market.**



SNF | Global Leader in Water-Soluble Polymers

To consolidate its position as a leader, SNF constantly expands its range of products and technologies through continuous investments in R&D. We also reinvest significant financial resources into improving and expanding our manufacturing assets to enable us to produce as close as possible to end-markets and users.


4.5 bn€
Sales Turnover

Global Overview


8 150
Employees


1711
Active Patents

Innovation


2
ISCC+
Certified Plants

*ISCC+, International Sustainability and Carbon Certification process, guarantees full traceability of the materials along the value chain.



21 Production Sites Worldwide

Our Activities:



Carbon Neutral by 2050

With 21 production facilities and subsidiaries in more than 55 countries, SNF Group is the world leader in water chemistry. As a leader in our industry, **we are responsible for addressing the planet's environmental challenges by going even further and working faster to strengthen water chemistry's ethical dimension.**

How to Achieve?



¹ ISCC+, International Sustainability and Carbon Certification process, guarantees full traceability of the materials along the value chain.

² Compares to our peers, based on 2022 CO₂ emissions (Scope 1+2) in tons per M€ sales.

³ Compares to our peers, based on 2022 Water Consumption in m3 per M€ sales.

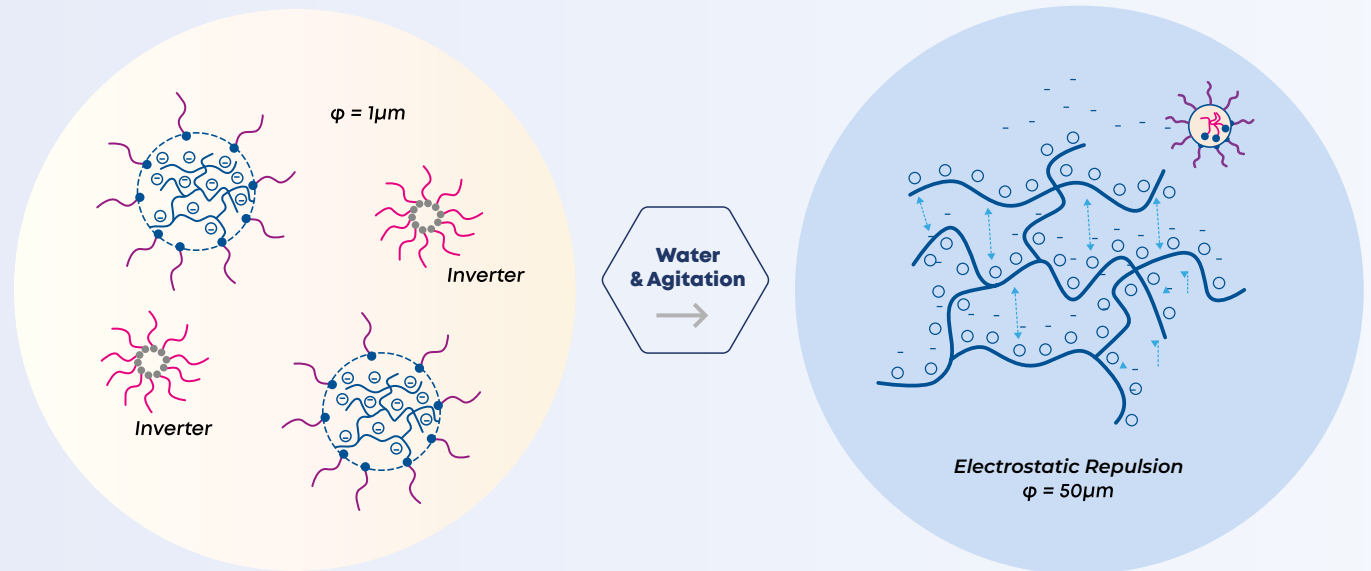
Rheology Modifiers

SNF Personal Care offers a wide range of rheology modifiers, thickeners, and film formers that provide thickening, conditioning, suspending effects, as well as various sensorial secondary benefits such as rich feel, glossy texture, and freshness for Skin Care, Hair Care, and Bath & Shower products.

Liquid Dispersion Polymers

LDPs (Liquid Dispersion Polymers) are water-in-oil emulsions where the water droplets act as microreactors in which the polymer is synthesized.

An oil-in-water emulsifier (surfactant) allows the Liquid Dispersion to invert once in water phase. Water is absorbed by the polymer which swells and builds viscosity.



Sustainable Process: Carbon Footprint Improvement

Using **SNF cold-processable inverse emulsions** help **save time and energy** in manufacturing skincare formulas.



70%
**MANUFACTURING
TIME SAVED**



96%
**EQUIVALENT CO₂
EMISSIONS SAVED**

Compared to hot-processable conventional emulsifying system

| Index

Skin Care

Hair Care

Bath & Shower



07

19

26



Skin Care

Achieving the Best Textures with SNF Inverse Emulsion Polymers



FLOCARE™ ET, FLOCARE™ ES, FLOCARE™ PSD, and NATURSOL™ EMI are Liquid Dispersion Polymers (LDPs) produced by inverse emulsion polymerization. With this process, it is possible to achieve very high molecular weight, cross-linked polymers with optimized rheological properties. SNF offers a wide range of products from low to highly concentrated thickeners.

NATURSOL™ EMI Lite is a readily biodegradable polymer with 78% of natural origin (ISO 16128). It perfectly balances sustainability and performance.

NATURSOL™ EMI 132 is 67% of natural origin and 100% Vegan.

SNF also offers rheology modifiers in powder form, such as **FLOCARE™ PSD 30**.

FLOCARE™ SK polymers are obtained by precipitation. These polymers are ready to use and provide transparent and viscous cold-process formulations.

FLOCARE™ SK 425 delivers transparency and high electrolyte resistance.











FLOCARE™ SK 403 provides both transparency and high-viscosity formulas at low concentrations.

Benefits :

- Multifunctional rheology modifiers: **thickening, stabilizing, and texturizing**
- Low to high concentrated thickeners can be added at any stage
- **Self-emulsifier:** additional surfactants not needed for stable formulations up to 30% oil
- Suspending properties
- **Ready & easy-to-use:** pre-neutralized liquid or powder
- Can be used in **cold** or **hot** process
- Compatible over a wide pH range
- Allows for formulations from sprays to creams
- Delivers **sensorial benefits** (freshness, hydration, softness)

Liquid Dispersion Polymers - Anionic

The Greener

Product	INCI Name	% Active	Optimal pH Range	Applications and Uses
 NATURSOL™ EMI <i>Lite</i>	Sodium Polyacrylate Starch, Octyldodecyl Myristate, Caprylyl/Capryl Glucoside	 57	5-10	Readily biodegradable polymer, 78% naturally derived. Light texture, fresh touch, and soft after-feel.
 NATURSOL™ EMI 132	Sodium Acrylate/Sodium Acryloyldimethyl Taurate Copolymer, C15-19 Alkane, Lauryl Glucoside	33	5-12	67% naturally derived. Formulate with natural index close to 100%. Light texture, fresh touch, and soft after-feel.
 NATURSOL™ EMI 30	Sodium Acrylate/Sodium Acryloyldimethyl Taurate Copolymer, Octyldodecyl Myristate, Caprylyl/Capryl Glucoside	 49	3-11	51% naturally derived. Light texture, soft, and non-tacky after-feel. Long lasting moisturization.
 NATURSOL™ EMI 76	Sodium Polyacrylate, Octyldodecyl Myristate, Caprylyl/Capryl Glucoside	 49	5-11	51% naturally derived. Good consistency, soft, and non-tacky after-feel. Long lasting moisturization.
 FLOCARE™ ET 100	Sodium Polyacrylate, Ethylhexyl Stearate, Trideceth-6	60	6-11	Glossy, fast absorption, soft and non-tacky after-feel, good consistency, and pick-up. Long lasting moisturization.
 FLOCARE™ ET 76	Sodium Polyacrylate, Hydrogenated Polydecene, Trideceth-6	57	6-11	Glossy, fast absorption, extra soft and non-tacky after-feel, good consistency and pick-up. Long lasting moisturization.
 FLOCARE™ ET 36 V	Sodium Acrylate/Sodium Acryloyldimethyl Taurate Copolymer, Hydrogenated Polydecene, Trideceth-6, Sorbitan Laurate	52	3-12	Soft skin after-feel. Used in anti-aging or anti-acne creams.

Recommended dosage for inverse emulsion polymers in formulations: 2 to 4% as supplied.



Considered naturally derived (ISO 16128-2:2017)



Contains natural ingredients

Liquid Dispersion Polymers - Anionic

The Classics

Product	INCI Name	% Active	Optimal pH Range	Applications and Uses
FLOCARE™ ES 502	Sodium Polyacrylate, Mineral Oil, Trideceth-6	50	6-11	Rich texture with a powdery feel. High electrolyte stability. Can be used in sunscreen formulations.
FLOCARE™ ET 30	Sodium Acrylate/Sodium Acryloyldimethyl Taurate Copolymer, Mineral Oil, Trideceth-6	58	3-11	Glossy, light, and soft skin feel with velvety effect. Good electrolyte stability.
FLOCARE™ ET 305	Polyacrylamide, C13-14 Isoparaffin, Laureth-7	40	3-10	Good electrolyte stability, soft ,and smooth skin feel with velvety effect.

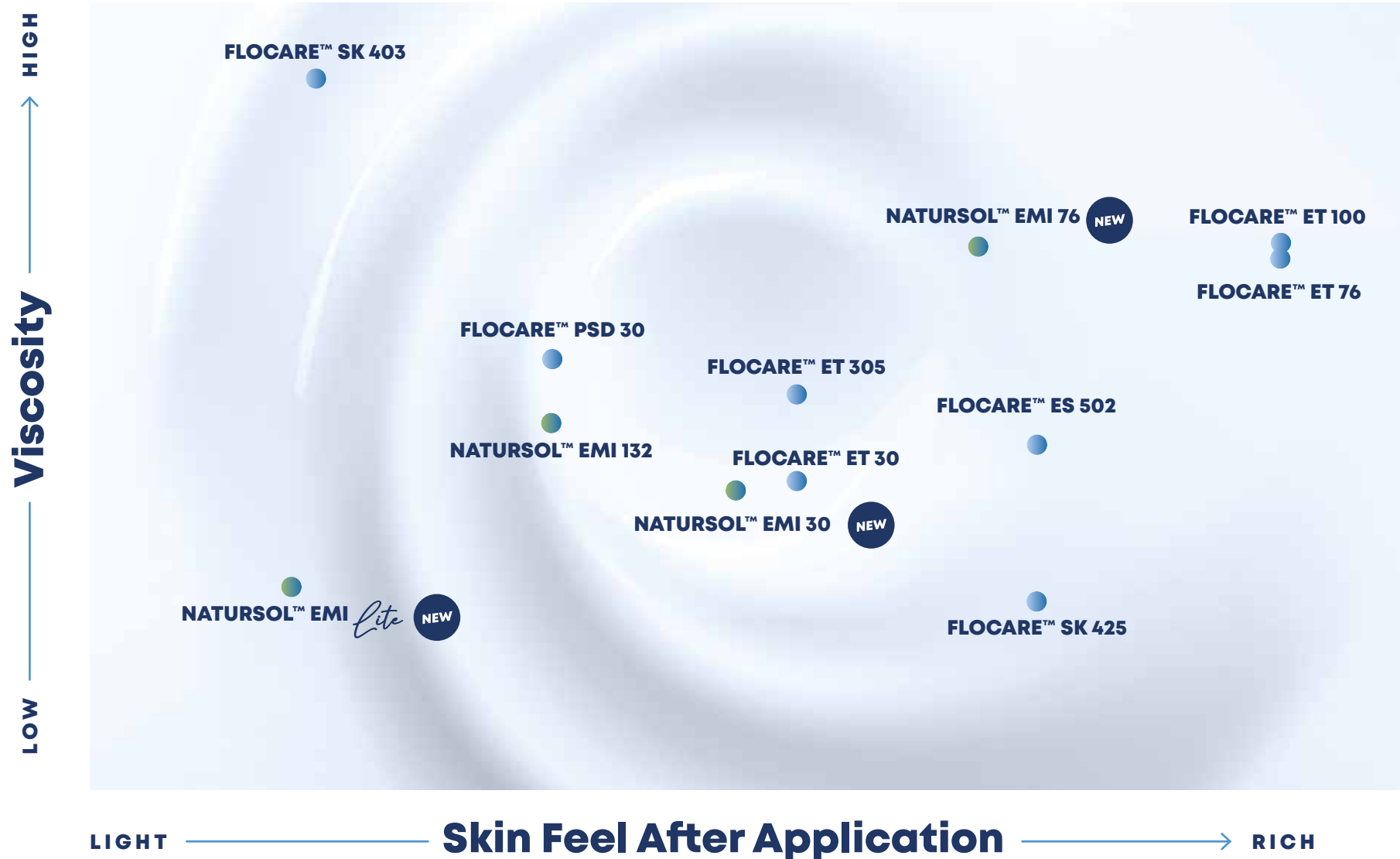
Recommended dosage for inverse emulsion polymers in formulations: 2 to 4% as supplied.

Powder Polymers - Anionic

Product	INCI Name	% Active	Optimal pH Range	Applications and Uses
FLOCARE™ PSD 30	Sodium Acrylate/Sodium Acryloyldimethyl Taurate Copolymer	> 85	3-11	Light and melting textures. Non-tacky and non-greasy, suitable for serum and hydro-alcohol gels.
FLOCARE™ SK 425	Ammonium Polyacryloyldimethyl Taurate	> 92	4-8	Gelling agent for crystal clear formulations. Delivers extreme resistance to electrolytes, provides foam stabilization, and ultra-soft after-feel. Recommended for medium viscosity. Ability to develop stable formulas in the absence of emulsifier.
FLOCARE™ SK 403	Ammonium Acryloyldimethyl Taurate/VP Copolymer	> 92	4-8	Gelling agent for crystal clear formulations. Delivers high viscosity and light, non-sticky after-feel. Texturizer and viscosity booster for oil-in-water emulsion. Ability to develop stable formulas in the absence of emulsifier.

Recommended dosage for powder polymers: 0.5 to 3% as supplied.

Sensory Profile Overview



Repairing Eye Contour Serum

SNF - SK 002

Commercial Name	INCI	Wt.%
Deionized Water	Water (Aqua)	QSP 100
Massocare Propanediol Nat MB ¹	Propanediol	2.00
Glycerin	Glycerin	2.00
NATURSOL™ EMI <i>Lite</i> ²	Sodium Polyacrylate Starch, Octyldodecyl Myristate, Caprylyl/Capryl Glucoside	2.00
Dub MCT 5545 ³	Caprylic/Capric Triglyceride	5.00
Tocobiol C ¹	Tocopherol (mixed) Beta Sitosterol, Squalene	0.05
Microcare BEHG ⁴	Benzyl Alcohol, Ethylhexylglycerin	0.80
Deionized Water	Water (Aqua)	5.00
CM-Glucan Granulate ⁵	Sodium Carboxymethyl Beta-Glucan	0.05
Number 6 ⁶	Propanediol, Water, Persea Gratissima (Avocado) Fruit Extract	1.00

Suppliers: ¹ CQ Masso; ² SNF; ³ Stéarinerie Dubois; ⁴ Thor; ⁵ Mibelle AG Biochemistry; ⁶ Laboratoires Expanscience

Moisturizing Cream

SNF - SK 006

Commercial Name	INCI	Wt.%
Deionized Water	Water (Aqua)	QSP 100
Glycerin	Glycerin	2.00
Preservative		qs
Natura Tec Ultrafeel™ AL ¹	C12-15 Alkyl Lactate	3.00
Natura Tec Abysoft™ ¹	Crambe Abyssinica Seed Oil Phytosterol Esters	2.00
Massocare MCT MB ²	Caprylic/Capric Triglyceride	2.00
Sweet Almond Oil - Refined ¹	Prunus Amygdalus Dulcis Oil	2.00
Tocobiol® C ²	Tocopherol (mixed), Beta-Sitosterol, Squalene	0.05
FLOCARE™ ET 76 ³	Sodium Polyacrylate, Hydrogenated Polydecene, Trideceth-6	2.00

Suppliers: ¹Natura-Tec; ²CQ Masso; ³SNF

Arctic Blue Serum

SNF - SK 008

Commercial Name	INCI	Wt.%
Deionized Water	Water (Aqua)	QSP 100
Geogard® ECT ¹	Benzyl Alcohol, Salicylic Acid, Glycerin, Sorbic Acid	0.80
Sodium Hydroxide (10% aqueous solution)	Water, Sodium Hydroxide	qs pH 6.5
Glycerin	Glycerin	3.00
NATURSOL™ EMI 132²	Sodium Acrylate/Sodium Acryloyldimethyl Taurate Copolymer, C15-19 Alkane, Lauryl Glucoside	2.80
Cetiol® C5 ³	Coco-Caprylate	5.00
Tocobiol® C ⁴	Tocopherol (mixed), Beta-Sitosterol, Squalene	0.05
Revivyl™ ⁵	Propanediol, Orobanchae Rapum Extract	0.30
Hydrintense™ ⁵	Sea Water, Propanediol, Porphyridium Cruentum Extract	0.50
Food color Brilliant Blue FCF 85% (0.1% solution)	Water, CI 42090	0.05
Fresh Hydration ⁵	Parfum	0.11

Suppliers: ¹Lonza; ²SNF; ³BASF; ⁴CQ Masso; ⁵Givaudan

Precious Gelée

SNF - SK 012

Commercial Name	INCI	Wt.%
Badoit	Water (Aqua)	QSP 100
Crystalhyal® ¹	Sodium hyaluronate	0.05
FLOCARE™ SK 425²	Ammonium Polyacryloyldimethyl Taurate	2.50
Butylene Glycol	Butylene Glycol	1.00
Ajidew® NL-50 ³	Sodium PCA	2.00
Lincoserve™ WpH-LO ⁴	Pentylene Glycol, Propanediol, Caprylyl Glycol, Ethylhexylglycerin	0.80
Food color Brilliant blue FCF 85% (0.1% solution)	Water, C.I. 42090	0.07
Solubilisant LRI ⁵	PPG-26 Buteth-26, PEG-40 Hydrogenated Castor Oil, Water	0.40
Aqua Azur ⁶	Parfum	0.07
Hydrintense™ ¹	Sea Water, Propanediol, Porphyridium Cruentum Extract	1.20
Citric acid (50% solution)	Water, Citric Acid	qs pH 5.5

Suppliers: ¹Givaudan; ²SNF; ³Ajinomoto; ⁴Lincoln Manufacturing, ⁵Sensient Beauty; ⁶Firmenich;



Cold-Process Mineral SPF 50 + SNF - SK 020



Commercial Name	INCI	Wt.%
Deionized Water	Water (Aqua)	QSP 100
Edeta BD ¹	Disodium EDTA	0.05
Glycerin	Glycerin	2.00
Keltrol® CG-SFT ²	Xanthan Gum	0.40
Eumulgin® SG ¹	Sodium Stearoyl Glutamate	1.00
Zemea® Propanediol ³	Propanediol	5.00
Cetiol® CC ¹	Dicaprylyl Carbonate	5.00
Massocare MCT MB ⁴	Caprylic/Capric Triglyceride	2.00
Phenoxyethanol	Phenoxyethanol	1.00
UV cut TiO2 60 VL ⁵	Titanium Dioxide, Coconut Alkanes, Polyhydroxystearic Acid, Stearic Acid, Alumina, Coco-Caprylate/Caprates	15.00
UV cut ZnO 72 NU ⁵	Zinc Oxide, Coconut Alkanes, Polyhydroxystearic Acid, Coco-Caprylate/Caprates, Dimethicone	25.00
Liposorb™ L-20 ⁶	Polysorbate 20	1.00
Liposorb™ O ⁶	Sorbitan Oleate	0.50
Dispersun DSP-OL100 ⁷	Polyhydroxystearic Acid	3.00
Gransurf 90 ⁵	Cetyl PEG/PPG-10/1 Dimethicone	1.00
NATURSOL™ EMI 132⁸	Sodium Acrylate/Sodium Acryloyldimethyl Taurate Copolymer, C15-19 Alkane, Lauryl Glucoside	4.00

Suppliers: ¹ BASF; ² CP Kelco; ³ Dupont Tate & Lyle BioProducts; ⁴ Coast Southwest ; ⁵ Grant Industries; ⁶ Vantage; ⁷ Innospec; ⁸ SNF

Daily Cold-Process Tinted SPF SNF - SK 029 B

Commercial Name	INCI	Wt.%
Deionized Water	Water (Aqua)	QSP 100
Keltrol CG SFT ¹	Xanthan Gum	0.50
EDETA BD	Disodium EDTA	0.05
Glycerin	Glycerin	2.00
Massocare MCT MB ²	Caprylic/Capric Triglyceride	2.00
Zemea® Propanediol ³	Propanediol	3.00
Parleam® 4 ⁴	Hydrogenated Polyisobutene	5.00
Linatural™ Ultra-1 ⁵	1,3 Propanediol, Benzyl Alcohol, Pentylene Glycol	1.80
Ganex™ V-216 ⁶	VP/Hexadecene Copolymer	2.00
UV Cut TiO2 60 VL ⁷	Titanium Dioxide, Coconut Alkanes, Polyhydroxystearic Acid, Alumina, Coco-Caprylate/ Caprates	20.00
Cremophor® RH40 ⁸	PEG-40 Hydrogenated Castor Oil	0.25
NATURSOL™ EMI 132⁹	Sodium Acrylate/Sodium Acryloyldimethyl Taurate copolymer, C15-19 Alkane, Lauryl Glucoside	4.00
Unipure Black LC 989 HLC ¹⁰	CI 77499, Hydrogenated Lecithin	0.08
Unipure Yellow LC 182 HLC ¹⁰	CI 77492, Hydrogenated Lecithin	3.84
Unipure Red LC 381 HLC ¹⁰	CI 77491, Hydrogenated Lecithin	0.24
Unipure White LC 981 HLC ¹⁰	CI 77891, Hydrogenated Lecithin	3.84
Covabead Velvet 10 ¹⁰	Polymethyl Methacrylate	1.00

Suppliers: ¹ CP Kelco; ² CQ Masso; ³ Dupont Tate&Lyle BioProducts; ⁴ Rossow; ⁵ Lincoln Manufacturing; ⁶ Ashland; ⁷ Grant Industries Inc; ⁸ BASF; ⁹ SNF; ¹⁰ Sensient Beauty

Mattifying Creamy Gel

SNF - SK 030*

Commercial Name	INCI	Wt.%
Massocare ININ ¹	Isononyl Isononanoate	4.00
Massocare MCT MB ¹	Caprylic/Capric Triglyceride	4.00
Natura-Tec Plantsil ²	Hydrogenated Ethylhexyl Oliviate, Hydrogenated Olive Oil Unsaponifiables	4.00
Demineralized Water	Water (Aqua)	76.65
Glycerin	Glycerin	4.00
EDTA Na2	Disodium EDTA	0.05
FLOCARE™ PSD 30³	Sodium Acrylate/Sodium Acryloyldimethyl Taurate Copolymer	1.50
Cameleon PTW ⁴	Titanium Dioxide, CI73360, Aluminum Hydroxide, Boron Nitride, Acrylate/Ammonium Methacrylate Copolymer, Cellulose Acetate, Propylene Glycol Stearate	4.00
Cameleon Gold ⁴	Mica, Iron Oxide (CI 77491), Titanium Dioxide, Acrylate/Ammonium Methacrylate Copolymer, Cellulose Acetate, Propylene Glycol Stearate	1.00
Cosphaderm Dicapo Natural ⁵	Caprylyl Glycol, Propanediol, Glyceryl Caprylate	0.70
AR788490 - Blue Matcha & Sea Salt ⁶	Parfum	0.10

*Developed by CQ Masso

Suppliers: ¹CQ Masso; ²Natura-Tec; ³SNF; ⁴Tagra; ⁵Cosphatec; ⁶CPL Aromas

Moisturizing Softy Cream

SNF - SK 032

Commercial Name	INCI	Wt.%
Deionized Water	Water (Aqua)	84.85
Glycerin	Glycerin	200
FLOCARE™ ET 30¹	Sodium acrylate/Sodium Acryloyldimethyl Taurate Copolymer, Mineral Oil, Trideceth-6	2.00
FLOCARE™ SK 403¹	Ammonium Acryloyldimethyl Taurate/VP Copolymer	0.30
DUB L1215 ²	C12 - C15 Alkyl Lactate	3.00
Natura-Tec Abysoft ³	Crambe Abyssinica Seed Oil Phytosterol Esters	2.00
Massocare MCT MB ³	Caprylic/Capric Triglyceride	2.00
Sweet Almond Oil – refined ³	Prunus Amygdalus Dulcis Oil	2.00
Tocobiol C ³	Tocopherol (mixed) (and) Beta-Sitosterol (and) Squalene	0.05
Linatural Ultra-3 ⁴	Phenethyl Alcohol, Pentylene Glycol, Propanediol	1.80

Suppliers: ¹SNF; ²Stéarinerie Dubois; ³CQ Masso; ⁴Lincoln Manufacturing



Velouté Corps

SNF - SK 038

Commercial Name	INCI	Wt.%
Deionized Water	Water (Aqua)	qsp 100
Glycerin	Glycerin	2.00
NATURSOL™ EMI <i>Lite</i> ¹	Sodium Polyacrylate Starch, Octyldodecyl Myristate, Caprylyl/Capryl Glucoside	3.00
Dub MCT 5545 ²	Caprylic/Capric Triglyceride	3.75
Dub IPM ²	Isopropyl Myristate	3.75
Massocare SQV ³	Squalane	3.75
Cetiol OE ⁴	Dicaprylyl Ether	3.75
Tocobiol C ³	Tocopherol (mixed), β-Sitosterol, Squalene	0.10
Linatural Ultra-3 ⁵	Propanediol/Pentylene glycol/Phenethyl alcohol	1.80
Passioline ⁶	Passiflora Edulis Seed Oil	0.50
NaOH (10% solution)	Aqua, Sodium Hydroxide	qs pH 5.5-6

Suppliers: ¹ SNF; ² Stéarinerie Dubois; ³ CQ Masso; ⁴ BASF; ⁵ Lincoln Manufacturing; ⁶ Laboratoires Expanscience

Instant Boost Moisture Foot Cream

SNF - SK 045

Commercial Name	INCI	Wt.%
Deionized Water	Water (Aqua)	qs 100
FLOCARE™ ET 100 ¹	Sodium Polyacrylate, Ethylhexyl Stearate, Trideceth-6	3.00
Edeta BD ²	Disodium EDTA	0.05
Glycerin	Glycerin	2.00
Dermanet Squalane ³	Glycerin & Water & Squalane & Hydrogenated Lecithin	2.00
NEOBEE® M-5 COSMETIC ⁴	Caprylic/Capric Triglyceride	2.00
Organic Dates Seed Oil ⁵	Balanites Aegyptiaca Kernel Oil	0.06
Lipex Shealiquid ⁶	Butyrospermum parkii (shea) Butter	1.00
Olive Oil ⁷	Olea Europea (Olive) Fruit Oil	2.00
Hydrosal Salcool ⁸	Propylene Glycol, Ethyl Menthane Carboxamide, Menthyl Lactate, Methyl Diisopropylpropionamide, Hydroxy-propylcellulose, Isopropyl Palmitate, Phenoxyethanol, Silica, Ethylhexylglycerin.	1.00
Endicare TN ⁹	C12-15 Alkyl Benzoate	2.00
Pineapple Guava Extract Blend A96122 ¹⁰	Aromatic blend	0.10
Suncranov 818 UP ¹¹	Coco-Glucoside	0.50
Euxyl PE 9010 ¹²	Phenoxyethanol (and) Ethylhexylglycerin	1.00
Gransil SiW-038 ¹³	Dimethicone (and) Polysilicone-11 (and) Butyrospermum Parkii (Shea) Butter (and) Aqua/Water (and) Glycerin (and) Decyl Glucoside.	1.00

Suppliers: ¹ SNF; ² BASF; ³ Bluesun International; ⁴ Dupont; ⁵ Bio Orient; ⁶ AAK; ⁷ Bertin; ⁸ Salvona; ⁹ Coast SouthWest; ¹⁰ Carrubba; ¹¹ LG; ¹² Jan Dekker; ¹³ Grant Industries



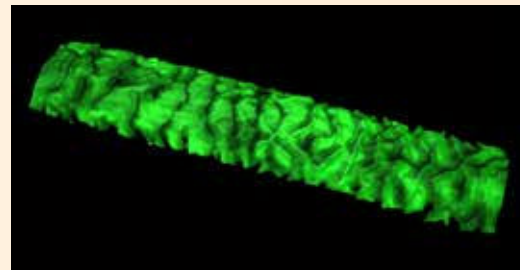
Hair **Care**



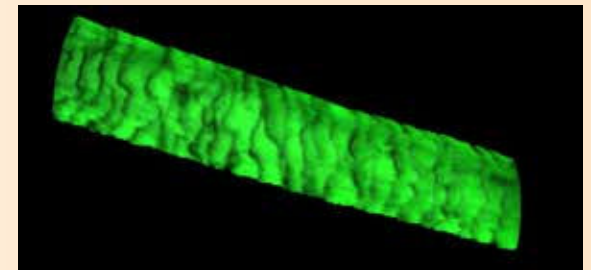
Conditioning Polymers and Cationic Inverse Emulsions

The **FLOCARE™** range of products is available in liquid (solution) or dry form. Film formers (conditioners) coat hair or skin. When used in hair care, our conditioning polymers add a smooth coating to the hair's surface. This protective coating provides easier combability and softness.

Softness



Untreated Hair (700x)

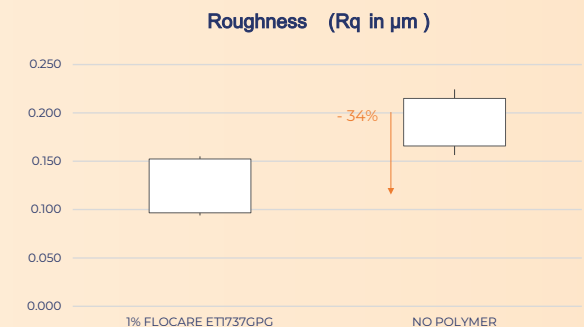


Hair Treated with FLOCARE™ ET 1737 GPG (1% active) (700x)

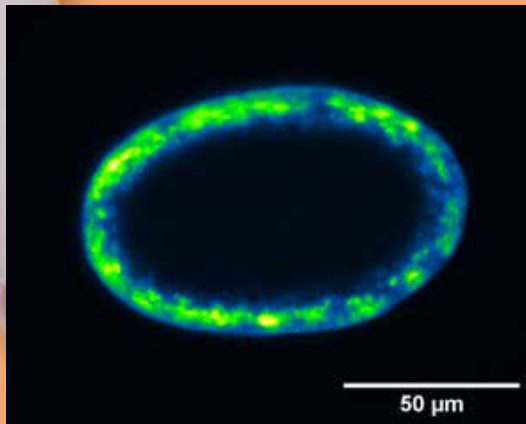
With the placebo, we observe that the hair has open scales (widely visible black grooves). The hair treated with the **FLOCARE™ ET 1737 GPG** range is visually similar with little open scales.

The roughness results demonstrate the effectiveness of the **FLOCARE™ ET 1737 GPG** range: 34% reduction in roughness at 1% polymer compared to placebo.

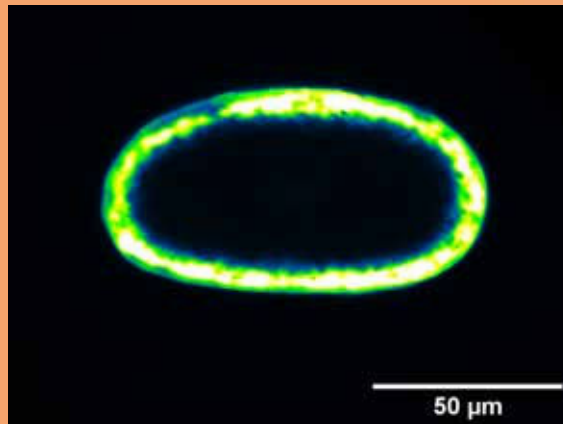
FLOCARE™ ET 1737 GPG range brings softness to the hair



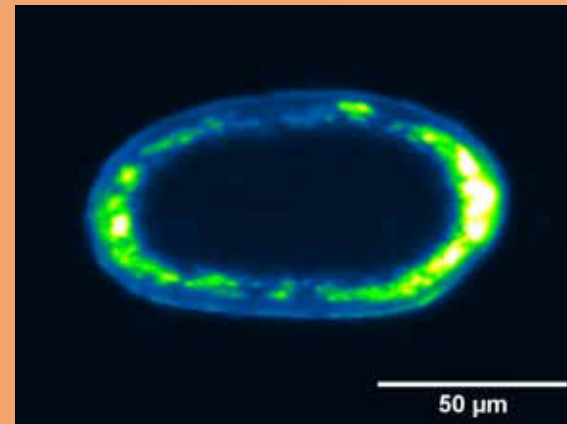
Thermal Protection



Control: Virgin caucasian hair



Heat stress on virgin caucasian hair



Hair Treated with FLOCARE™ ET 1737 GPG (1% active) and stressed with heat

The penetration of the dye (fluorescence signal) is visualized in a color range (low levels in the dark, high levels in bright colors). Applying 1% **FLOCARE™ ET 1737 GPG** showed beneficial effects on the structural integrity and porosity of the hair fibers.

Conditioning Polymers

Product	INCI Name	% Active	Recommended Dosage (Active %)	Applications and Uses
FLOCARE™ C 106 MV	Polyquaternium-6	39 - 41	0.2 - 0.5	Use in high pH or highly reactive formulations such as bleaches, hair color, or relaxers. This grade is self-preserved.
FLOCARE™ C 107 LM PF	Polyquaternium-7	8.8 - 9.8	0.2 - 0.5	Richness of foam, improvement of combability without build-up. Easy to use compared to PQ-6. Used in shampoos and body wash.
FLOCARE™ C 107 SC PF	Polyquaternium-7	39 - 41	0.2 - 0.5	Richness of foam, improvement of combability without build-up. Easy to use compared to PQ-6. Used in shampoos and body wash.
FLOCARE™ C 122 PF	Polyquaternium-22	39 - 43	0.2 - 0.5	Delivers conditioning in extreme pH. Mainly used in hair color, hair dyes, and hair bleach.
FLOCARE™ C 139 PF	Polyquaternium-39	10.2 - 11.5	0.2 - 0.5	Allows rich and thick foam with improved stability. Used in shampoos for damaged hair with good wet and dry combing properties.
NATURSOL™ G 101	Guar Hydroxypropyltrimonium Chloride	100	0.2 - 0.75	Good conditioning effect. Allows deposition of silicone or other oils. Greater foam stabilization in the presence of sebum.
NATURSOL™ G 112	Guar Hydroxypropyltrimonium Chloride	100	0.2 - 0.75	Purified guar derivative providing good conditioning benefits. Particularly recommended in transparent shampoos, body wash, and bath and shower lotions.
NATURSOL™ G 202	Hydroxypropyl Guar Hydroxypropyltrimonium Chloride	100	0.2 - 0.75	Enables the creation of transparent formulations. This guar is designed for high conditioning and it improves wet and dry combability. Brings excellent foam density.
NATURSOL™ PQ 10 LM	Polyquaternium-10	>94	0.2 - 0.75	Compatible with a wide range of anionic, non-ionic, and cationic systems. NATURSOL™ PQ 10 LM and NATURSOL™ G : a duo that elevates the conditioning performance of shampoos without compromising their crystal clear transparency.

Rheology Modifiers

Product	INCI Name	% Active	Optimal pH Range	Applications and Uses
FLOGEL™ FG 900 FLOGEL™ FG 1000	Carbomer	> 95	5 - 10	Efficient thickening and stabilization. Soluble in water and alcohol. Provides high viscosity even at low concentrations (< 1%). Designed for hair sprays or hair styling gels.
FLOCARE™ ET 1237 PPI	Polyquaternium-37, Mineral Oil, PPG-1 Trideceth-6	48 - 52	3 - 8	Multifunctional additive to deliver high thickening, conditioning, and straightening properties. Allows formulators to optimize the ingredients used in a cationic system (conditioners).
FLOCARE™ ET 1737 GPG	Polyquaternium-37, Propylene Glycol Dicaprylate/Dicaprate, PPG-1 Trideceth-6	48 - 52	3 - 8	Multifunctional additive to deliver high thickening, conditioning, and straightening properties. Allows formulators to optimize the ingredients used in a cationic system (conditioners).
FLOCARE™ ES 502	Sodium Polyacrylate, Mineral Oil, Trideceth-6	50	6 - 11	Allows hair color formulations. Provides viscosity and a creamy texture.
FLOCARE™ PSD 1037 LV	Polyquaternium-37	> 85	3 - 8	Straightening properties allow conditioning without build-up, especially for damaged fine hair. Recommended if electrolyte stability is required.
FLOCARE™ PSD 1037 XT	Polyquaternium-37	> 85	3 - 8	Suitable for transparent formulations with high yield value. Multifunctional additive to deliver thickening, conditioning, and straightening properties.

Recommended dosage is: 2 to 4% as supplied for FLOCARE™ ET and FLOCARE™ ES range
1 to 2% as supplied for FLOCARE™ PSD range

Styling Aids

FLOCARE™ C 111 PF FLOCARE™ C 111 NO	Polyquaternium-11	19 - 21	0.2 - 1	Helps with moisturizing and aids in styling. Recommended for mousses and creams.
--	-------------------	---------	---------	--

Hair Mask

SNF - HC 007

Commercial Name	INCI	Active %
Deionized Water	Water (Aqua)	QSP 100
FLOCARE™ C 139 PF¹	Polyquaternium-39	0.10
Massocare IPP ²	Isopropyl Palmitate	3.00
Phenoxyethanol	Phenoxyethanol	0.80
FLOCARE™ ET 1737 GPG¹	Polyquaternium-37, Propylene Glycol Dicaprylate/Dicaprate, PPG-1 Trideceth-6	1.50

Suppliers: ¹SNF; ²CQ Masso

Clear Conditioner

SNF - HC 015

Commercial Name	INCI	Active %
Deionized Water	Water (Aqua)	QSP 100
NATURSOL™ G 202¹	Hydroxypropyl Guar Hydroxypropyltrimonium Chloride	0.50
FLOCARE™ PSD 1037 XT¹	Polyquaternium-37	1.00
Saealoe Vera Juice ²	Aloe Barbadensis (Leaf) Juice	3.00
Phenoxyethanol	Phenoxyethanol	0.80
Citric Acid (10% aqueous solution)	Water, Citric Acid	qs pH 4.0

Suppliers: ¹SNF; ²CQ Masso

Defining Cream

SNF - HC 014



Commercial Name	INCI	Active %
Deionized Water	Water (Aqua)	QSP 100
Glycerin	Glycerin	2.00
FLOCARE™ PSD 1037 LV¹	Polyquaternium-37	2.00
Jjoba oil	Simmondsia Chinensis Seed oil	3.00
Tocobiol® C ²	Tocopherol (mixed), β-Sitosterol, Squalane	0.05
Phenoxyethanol	Phenoxyethanol	0.80
NaOH (10% aqueous solution)	Water, Sodium Hydroxide	qs pH 5.0

Suppliers: ¹SNF; ²CQ Masso



Sun-Kissed Mist

SNF - HC 020

Commercial Name	INCI	Active %
Deionized Water	Water (Aqua)	QSP 100
FLOCARE™ PSD 1037 XT¹	Polyquaternium-37	0.40
Ethanol	Ethanol	10.00
ROCKING SH. B.A ²	Parfum	1.00
Solubilisant LRI ³	PPG-26-Buteth-26, PEG-40 Hydrogenated Castor Oil, Water	2.50
Glycerin	Glycerin	1.00
PARSOL HS ⁴	Phenylbenzimidazole sulfonic acid	0.02
Phenoxyethanol	Phenoxyethanol	0.40
	Mica	

Suppliers: ¹ SNF; ² Eurofragrance; ³ Sensient Beauty; ⁴ BASF

Heat Wave Defender

SNF - HC 023

Commercial Name	INCI	Active %
Deionized Water	Water (Aqua)	QSP 100
Eau florale de Rose	Rosa Damascena Flower Water	2.00
Eau florale de Ylang-Ylang	Cananga Odoreta Flower Water	2.00
D-Panthenol 75 W ¹	Parfum	1.00
Beauté by Roquette® GA290 ²	Gluconolactone	3.00
FLOCARE™ ET 1737 GPG³	Polyquaternium-37, Propylene Glycol Dicaprylate/Dicaprate, PPG-1 Trideceth-6	1.25
FLOCARE™ C 111 PF³	Polyquaternium-11	0.50
Coconut Oil ⁴	Cocos Nucifera (Coconut) Oil	2.00
Castor Oil ⁵	Ricinus Communis Seed Oil	2.00
Microcare BEHG ⁶	Benzyl Alcohol, Ethylhexylglycerin	0.80
Sodium Hydroxyde (10% aqueous solution)	Aqua, Sodium Hydroxyde	qs pH 4.4-4.6

Suppliers: ¹ BASF; ² Roquette; ³ SNF; ⁴ Vantage; ⁵ Bertin; ⁶ THOR



The image is a composite background. The left side shows a close-up of a hand holding a showerhead, with a spray of water visible. The right side is a vertical gradient from light pink at the top to orange at the bottom, overlaid with several horizontal, wavy bands of a darker pink color. The text 'Bath & Shower' is centered across the middle of the image.

Bath & Shower

Conditioning Agents

Product	INCI Name	% Active	Recommended Dosage (Active %)	Applications and Uses
FLOCARE™ C 107 LM PF	Polyquaternium-7	8.8 - 9.8	0.1 - 0.25	Provides rich and creamy foam to bath and shower products with conditioning properties and soft after-feel to the skin.
FLOCARE™ C 122 PF	Polyquaternium-22	39 - 43	0.1 - 0.25	Creates stable, rich, and dense foam to bath and shower products. Provides conditioning properties and soft after-feel to the skin.
FLOCARE™ C 139 PF	Polyquaternium-39	10.2 - 11.5	0.1 - 0.25	Creates stable, rich, and dense foam to bath and shower products. Provides conditioning properties and soft after-feel to the skin.

Rheology Modifiers

Product	INCI Name	% Active	Optimal pH Range	Applications and Uses
FLOGEL™ FG 900 FLOGEL™ FG 1000	Carbomer	> 92	5 - 10	Efficient thickening and stabilization. Soluble in water and alcohol. Provides high viscosity even at concentrations < 1%. Designed for sanitized hand soaps and scrub formulations.
FLOCARE™ SK 425	Ammonium Polyacryloyldimethyl Taurate	> 92	4 - 8	Transparent formulations and exceptional sensory feel. Extreme resistance to electrolytes. Ideal for formulations with active ingredients.

Brightening Facial Cleanser

SNF - SG 004

Commercial Name	INCI	Active %
Deionized Water	Water (Aqua)	QSP 100
AHA fruit acids	Aqua, Vaccinium Myrtillus Fruit Extract, Saccharum Officinarum Extract, Citrus Aurantium Dulcis Fruit Extract, Citrus Limon Fruit Extract, Acer Saccharum Extract	2.00
FLOCARE™ SK 425¹	Ammonium Polyacryloyldimethyl Taurate	2.00
Food color Ponceau 4R 80% (0.10% solution) ²	Water, CI 16255	0.15
Amphotensid B4/CONC-I ³	Cocamidopropyl Betaine	4.00
Miranol® Ultra C32 ⁴	Sodium Cocoamphoacetate	0.96
Glycerin	Glycerin	3.00
Lincoserve™ WpH-LO ⁵	Pentylene Glycol, Propanediol, Caprylyl Glycol, Ethylhexylglycerin	0.80
Solubilisant® LRI ⁶	PPG-26 Buteth-26, PEG-40 Hydrogenated Castor Oil, Water	1.00
Pamplemousse rose	Parfum	0.50
Sodium Hydroxide (10% aqueous solution)	Water, Sodium Hydroxide	qs pH 4.5

Suppliers: ¹SNF; ²Symrise; ³Zschimmer & Schwarz; ⁴Verdant; ⁵Lincoln; ⁶Sensient Beauty

Facial Scrub

SNF - SG 005

Commercial Name	INCI	Active %
Deionized Water	Water (Aqua)	QSP 100
FLOCARE™ SK 425¹	Ammonium Polyacryloyldimethyl Taurate	2.00
Protelan™ LS 9011/SL ²	Sodium Lauroyl Sarcosinate	1.90
Amphotensid B4/CONC-I ²	Cocamidopropyl Betaine	3.00
Glycerin	Glycerin	3.00
Euxyl® PE 9010 ³	Phenoxyethanol, Ethylhexylglycerin	0.80
Apricot exfoliator 1000 ⁴	Prunus armeniaca (apricot) seed powder	0.30
Solubilisant® LRI ⁵	PPG-26 Buteth-26, PEG-40 Hydrogenated Castor Oil, Water	0.30
Crème d'abricot	Parfum	0.13

Suppliers: ¹SNF; ²Zschimmer & Schwarz; ³Schülke; ⁴Lessonia; ⁵Sensient Beauty

Clear Velvet Body Wash

SNF - SG 006

Commercial Name	INCI	Active %
Deionized Water	Water (Aqua)	QSP 100
Glycerin	Glycerin	1.80
Zetesol LES2/SL ¹	Sodium Laureth Sulfate	8.00
Miranol Ultra C32 ²	Sodium Cocoamphoacetate	3.00
Euxyl™ PE9010 ³	Phenoxyethanol, Ethylhexylglycerin	0.80
Citric Acid (50% aqueous solution)	Water, Citric Acid	qs pH 5.0-5.5
FLOCARE™ C 107 LMPF⁴	Polyquaternium-7	0.20
Sodium Chloride	Sodium Chloride	0.40

Suppliers: ¹Zschimmer & Schwarz; ²Verdant; ³Schülke; ⁴SNF



Videos



NATURSOL™ EMI 132



FLOCARE™ SK 425



**FLOCARE™ PQ 37
RANGE**





personalcare.snf.com

© 2024 SNF. All Rights Reserved.

While SNF makes reasonable efforts to ensure the information is accurate and up-to-date, SNF makes no warranties or representations, express or implied, as to the accuracy, completeness, or any other aspect of the information on this document and assumes no liability in connection with any use of this information. Nothing herein shall be construed as a recommendation or license to use any information found that conflicts with any patent, trademark, or copyright of SNF or others, and SNF makes no representations or warranties, express or implied that any use of this information will not infringe any such patent, trademark, or copyright.



SNF Group
ZAC de Milieux
rue Adrienne Bolland
42163 Andrézieux Cedex
FRANCE

flocare@snf.com
personalcare.snf.com

SNF Holding Company
1 Chemical Plant Road
Riceboro, Georgia 31323
UNITED STATES of AMERICA

SNF do Brazil Ltda.
Estrada Bonsucesso
Itaquaquecetuba, 80
V Maria de Lourdes
Guarulhos SP 07251-280
BRASIL

SNF China Specialty
Chemicals Division Co.Ltd.
Room 603, Building 4
Greenland Qihangguoji,
Yuxi Road
Houshayu, Shunyi District
Beijing, 101300
CHINA



Supplied by: